

# RIVER WATER TREATMENT SYSTEM





## River Water Treatment Systems are Preferred In Those Areas

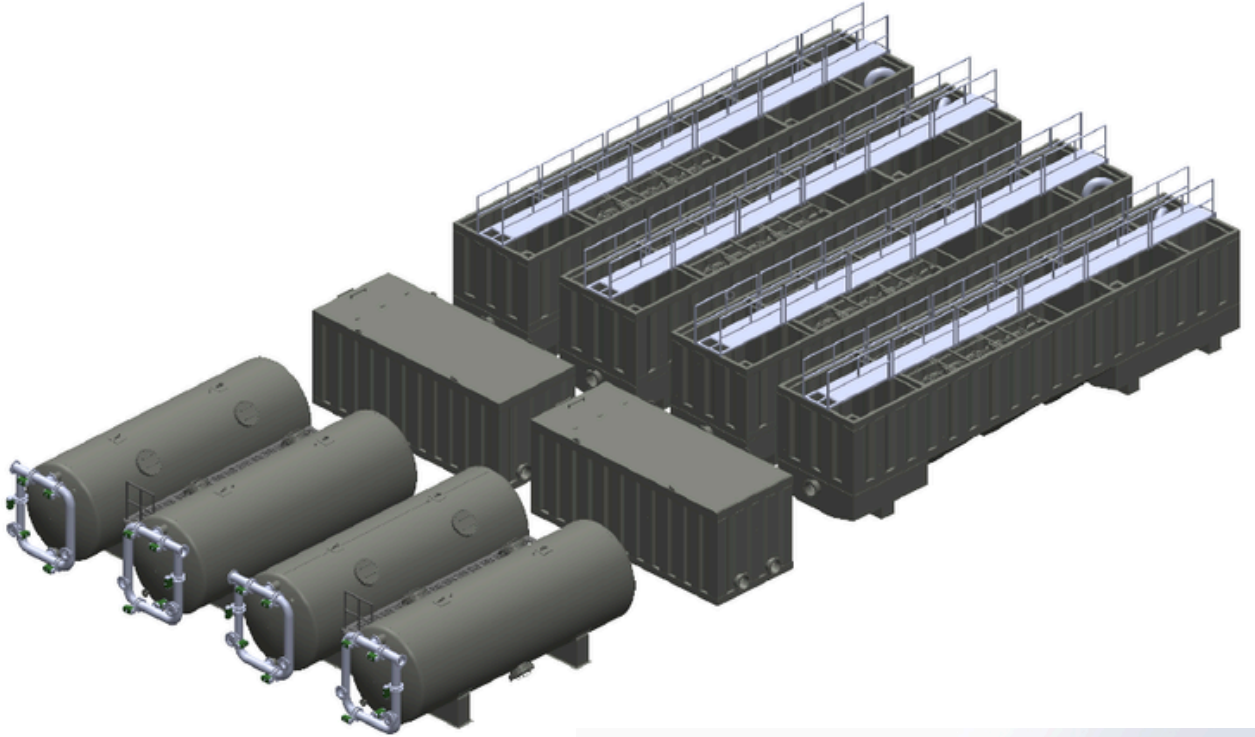
- \* The villages and rural areas
- \* Current temporary areas
- \* Industrial zones
- \* Industrial facilities
- \* Construction fields
- \* Military regions
- \* Refugee camps
- \* Construction site and field



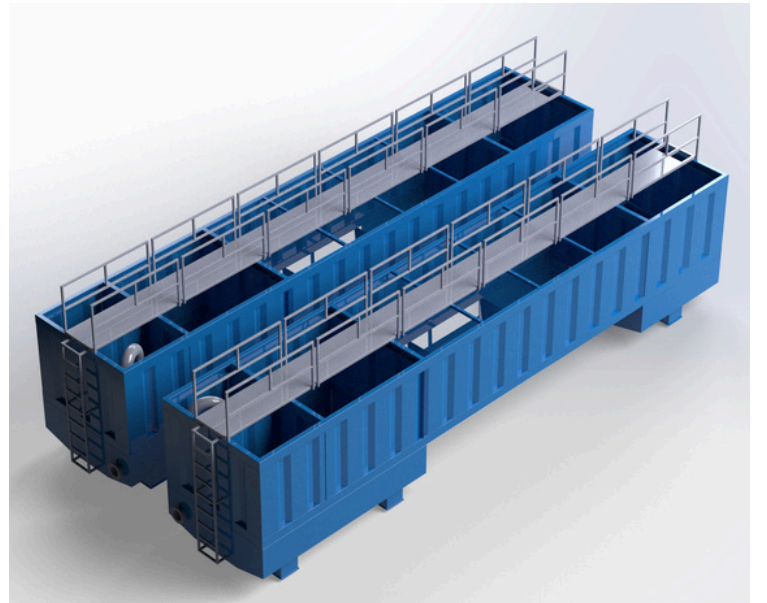
River water contains too much particles. The high amount of particles are removed from the water by river water treatment systems.

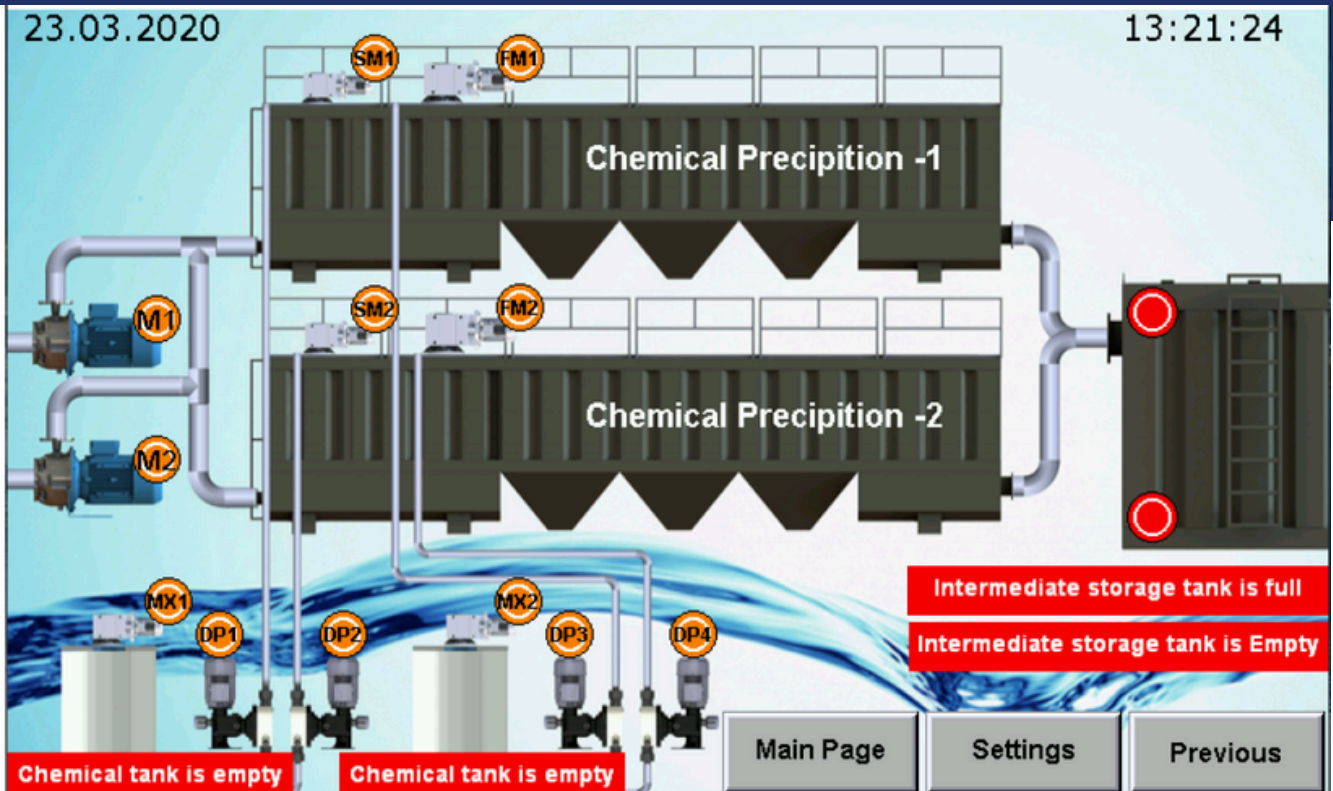
River water treatment systems are designed specially for drinking or domestic water according to your demands.

# RIVER WATER TREATMENT SYSTEMS CAPACITIES

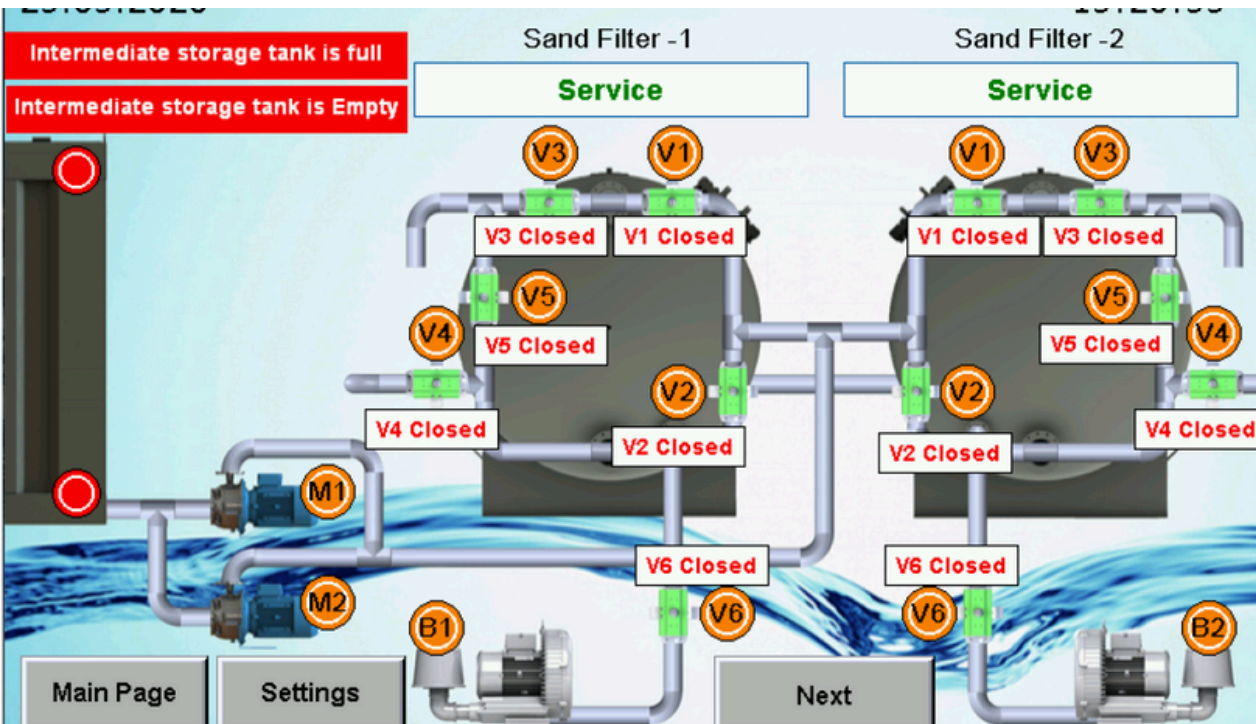


- \* 50 m<sup>3</sup>/h
- \* 100 m<sup>3</sup>/h
- \* 200 m<sup>3</sup>/h
- \* 300 m<sup>3</sup>/h
- \* 400 m<sup>3</sup>/h
- \* 500 m<sup>3</sup>/h



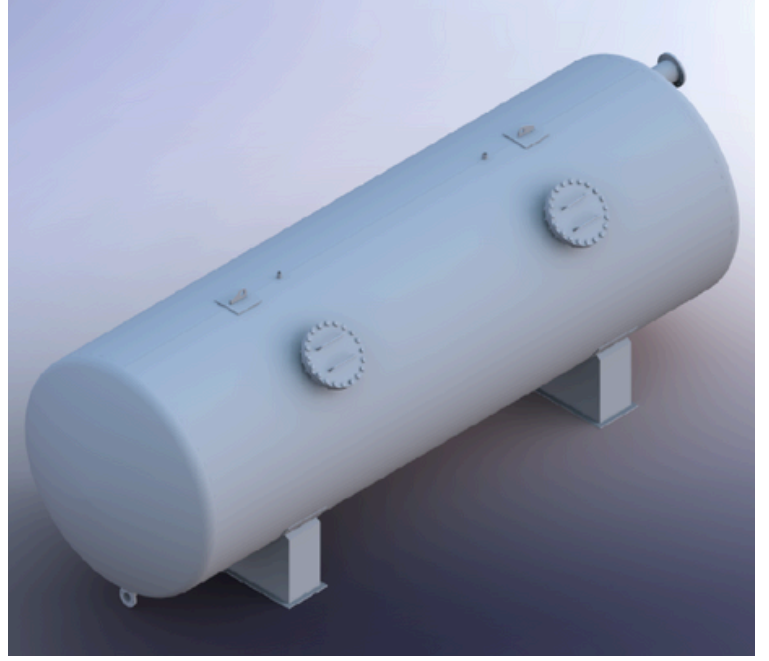
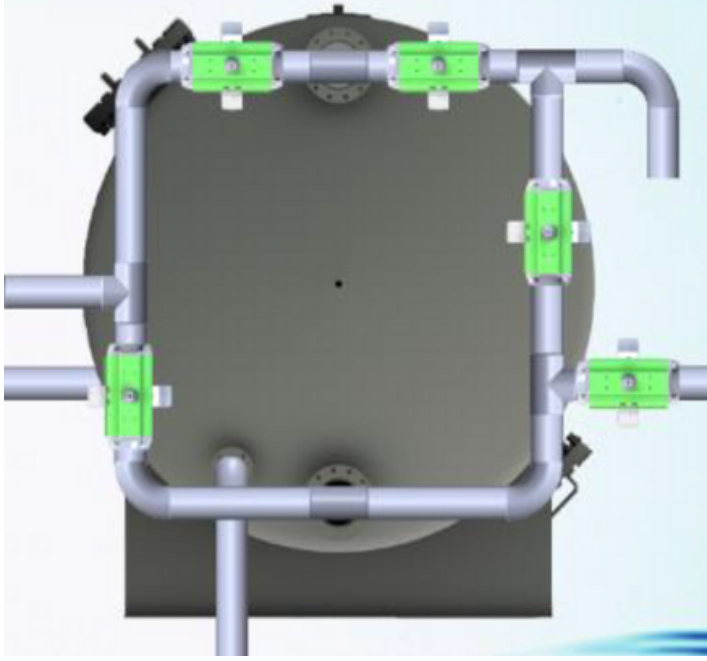


\* The precipitation system screen design.



\* Sand filter and chemical precipitation system user manual

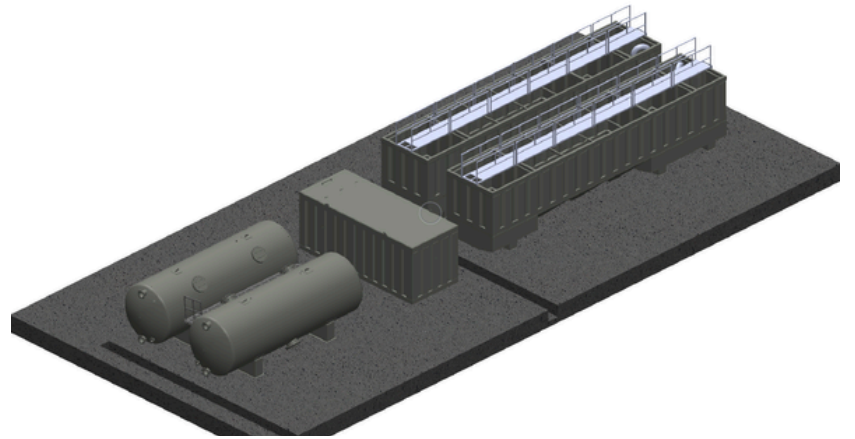
## SAND FILTER



Sand filters ensure that suspended substances are retained in water. Sand filters also benefit from the subsequently integrated systems. These filters remove the residue and particles that cause turbidity in the water.

There are three main types of sand filters; fast (gravity) sand filters, upstream sand filters and slow sand filters. All three methods are widely used in the water industry worldwide.

While the first two require the use of flocculant chemicals to work efficiently, slow sand filters can produce very high-quality water, without the need for chemical aids, with 90% to 99% (depending on the pressure) .



## PRECIPITATION SYSTEM

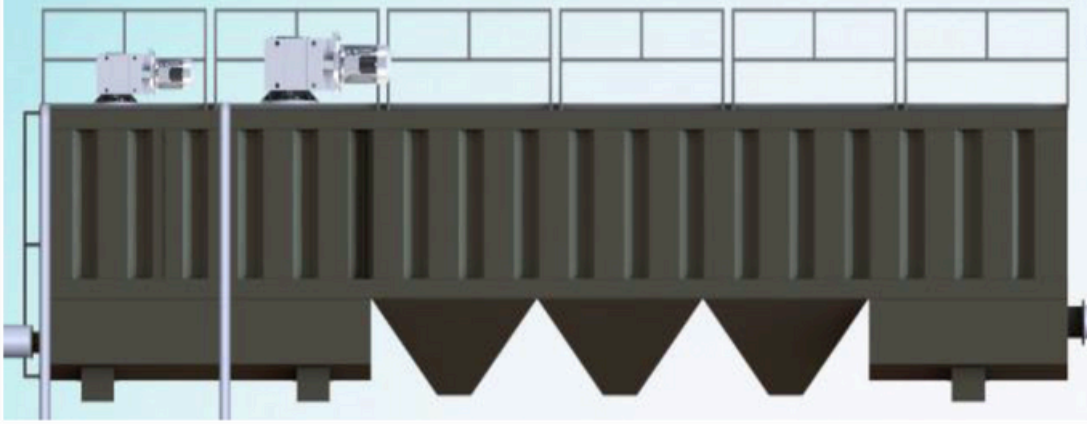
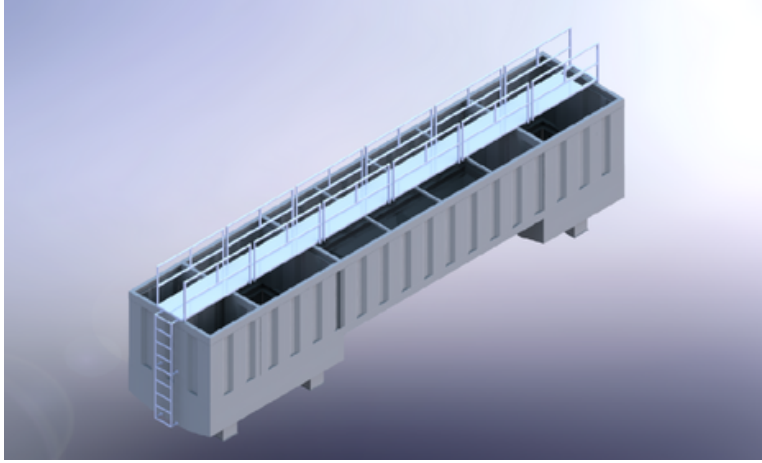


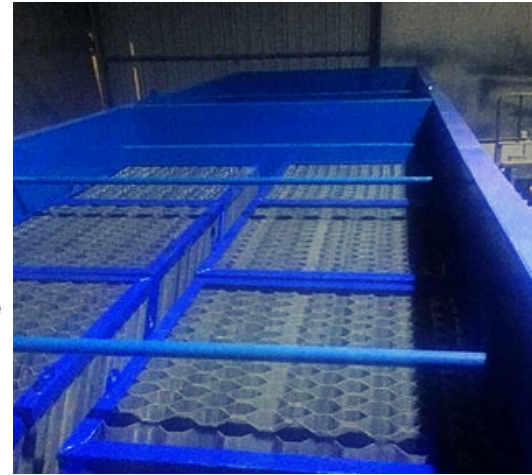
Figure 2 (Precipitation Unit)

Chemical precipitation is a basic process, defined as facilitating the removal of chemicals dissolved in water, by precipitation, by changing the physical state of dissolved or suspended solids.



There are two mixers in each precipitation unit, fast and slow. These mixers are used to facilitate mixing of chemicals with water to be treated. There are waiting pools to precipitate suspended solids formed after these mixing processes.

Lamellas are used in these pools to accelerate the collapse. After chemical treatment, the treatment of raw water is usually done by precipitation. Lamella precipitation is generally used to reduce the required precipitation area. Unlike conventional deposition, lamella deposition provides high deposition area in the low surface area, saving space. After settling, the purified water passes into the storage tank, water from the storage tanks is fed by horizontal centrifugal pumps and pressurized to the sand filters.



## CONTROL UNIT



Electric board, IP 54 is suitable to contain the power, control, monitoring and alarm devices for the plant. The controls shall be identified by metal plates fixed by screws. All instruments shall be safety anchored and located so as to keep proper geometry, both horizontally and vertically.





## HEAD OFFICE

Fatih Sultan Mehmet Mah. Poligon  
Cad. Buyaka 2 Sitesi 3 Blok No:8C İç  
Kapı No:1 Ümraniye/ İstanbul-Turkey

## Factory

Sultan Orhan Mah. 1172 Sok. No:25/1  
Gebze/ Kocaeli/Turkey



+90(216) 526 0426



info@vatekcevre.com



## ANKARA FACTORY

Saray Mah. 58. Cad. Eski 58.Sk. No:22/1  
Kahramankazan /Ankara-Turkey

## OUR REPRESENTATIVE OFFICES



VATEK Water and Waste  
Water Treatment  
Technologies Ltd.

Office 3&4 338A Regents  
Park Road / London



VATEK-AL SH.P.K.

Rruga "Reshit Çollaku", Pallati Nr.38,  
Shkalla Nr.1, Apt.7 Kati 4 Tirane/Albania



VATEK DUBAI

Trade License: 27065  
Dubai Silicon Oasis, DDP, Building A1,  
Dubai, United Arab Emirates